

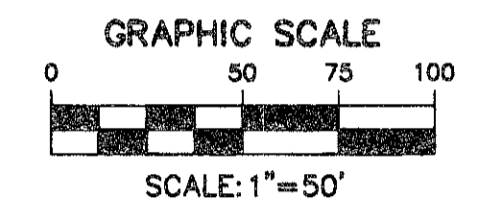
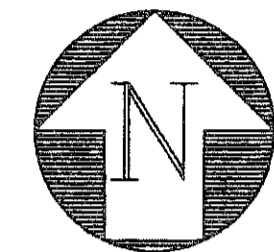
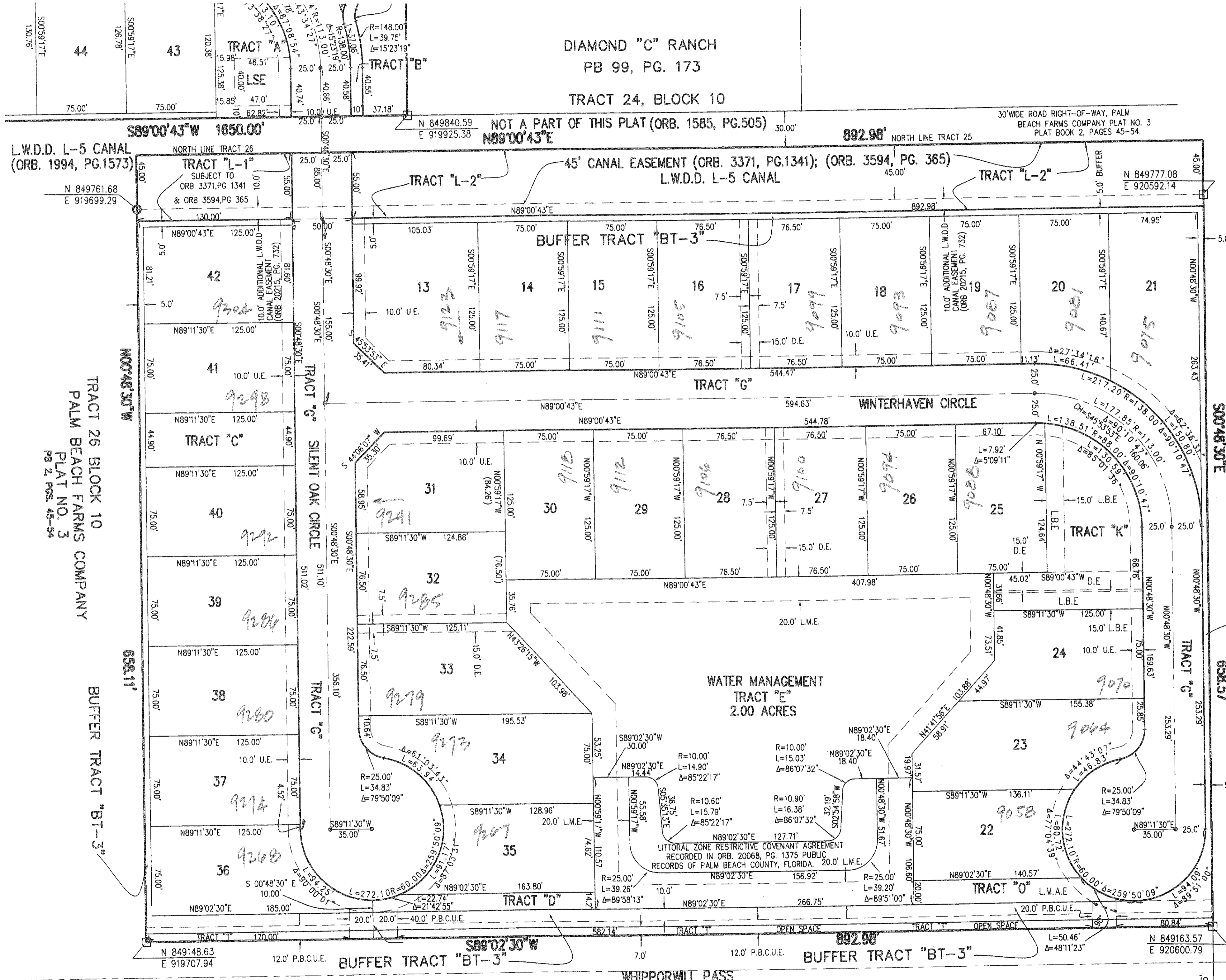
PIONEER TRAIL, A P.U.D.

Being a replat of Tracts 22, 23, and the East Half of Tract 21, Block 10, together with Tract 25 and the East 232.4 feet of Tract 26, Block 10, all of Palm Beach Farms Co. Plat No. 3, as recorded in Plat Book 2, Pages 45 through 54, Public Records of Palm Beach County, Florida, and lying in Section 6, Township 44 South, Range 42 East, Palm Beach County, Florida.

2

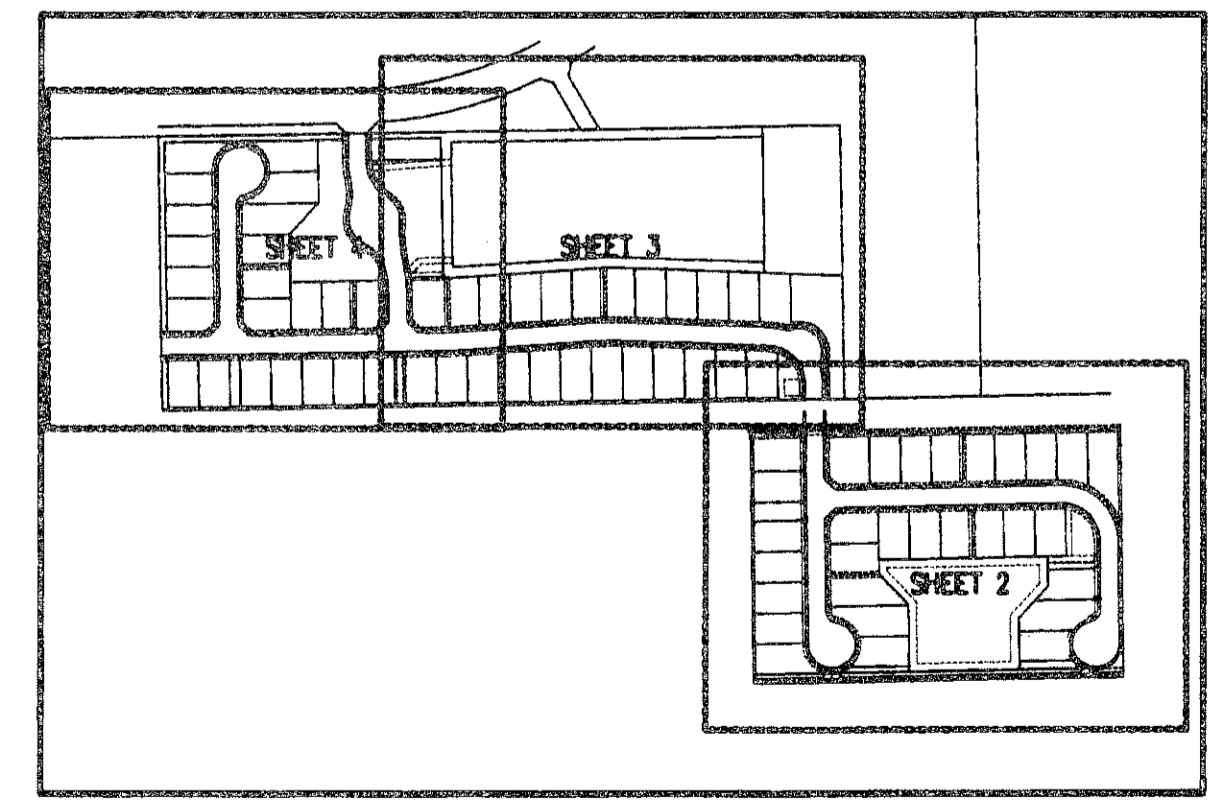
SEE SHEET 3

SHEET 2 OF 4
JUNE 2006



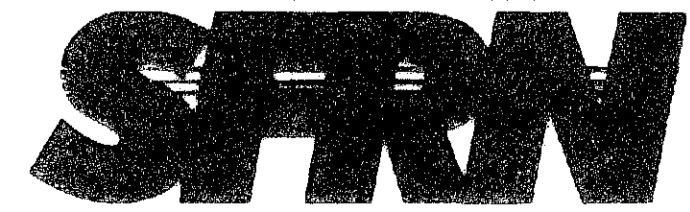
LEGEND

- U.E. = UTILITY EASEMENT
- D.E. = DRAINAGE EASEMENT
- = DENOTES PERMANENT REFERENCE MONUMENT SET.
- = DENOTES PERMANENT CONTROL POINT.
- CH = CHORD
- R = RADIUS
- L = ARC LENGTH
- Δ = CENTRAL ANGLE
- (N.R.) = NON-RADIAL
- O.R.B. = OFFICIAL RECORD BOOK
- PG. = PAGE
- L.M.E. = LAKE MAINTENANCE EASEMENT
- L.B.E. = LANDSCAPE BUFFER EASEMENT
- L.S.E. = LIFT STATION EASEMENT
- P.B.C.U.E. = PALM BEACH COUNTY UTILITY EASEMENT
- L.M.A.E. = LAKE MAINTENANCE ACCESS EASEMENT



THIS INSTRUMENT PREPARED BY GARY M.F. RAYMAN, PSM # LS2633 STATE OF FLORIDA, IN THE OFFICES OF SFRN, INC., ENGINEERS, SURVEYORS & MAPPERS, 1201 BELVEDERE ROAD, WEST PALM BEACH, FLORIDA 33405. CERTIFICATE OF AUTHORIZATION NO. LB0006803

PIONEER TRAIL, A P.U.D.



| | |
|--------------|-------------|
| DATE | 06/12/2006 |
| SCALE | 1" = 50' |
| CAD FILE | 4017.01.dwg |
| SDSK PROJECT | 4017 |
| DRAWN | SFRN STAFF |
| CHECKED | G. RAYMAN |

SHEET
2/4
JOB NO.
04017.01

SFRN Engineers • Surveyors • Mappers
1201 BELVEDERE ROAD, WEST PALM BEACH, FLORIDA 33405
PH (561)655-1151 • FAX (561)832-9390 • WWW.SFRNINC.COM

PREPARED BY: GARY M.F. RAYMAN, PSM # LS2633
DATE: 06/12/2006
SCALE: 1" = 50'
CADD: 4017.01.dwg
PROJECT: 4017
DRAWN: SFRN STAFF
CHECKED: G. RAYMAN

Y:\land Projects\24\4017\01.dwg 9/12/2006 12:26:55 PM EST

P.B.C. CONTROL POINT "PBF-15"
S89°25'34"E 607.50'
N 84°129.327' E 920654.818